

ROOF TOP ANCHORS

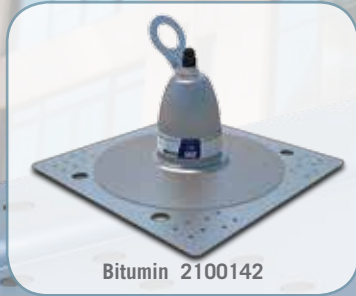
SOLUTIONS FOR YOUR ROOF TOP FALL PROTECTION



Membrane 2100139



PVC 2100140



Bitumin 2100142



Standing Seam 2100138



Metal, Concrete, Wood 2100133



ROOF TOP ANCHORS



ENSURING STRUCTURAL INTEGRITY AND SUPERIOR PROTECTION

Roofs are changing to accommodate more insulation materials and being designed to utilize lighter materials and take advantage of new technologies. At Capital Safety we are staying ahead of these changes and have updated DBI-SALA's Roof Top Anchors to ensure the highest levels of safety in modern building design.

Building owners and roof maintenance/replacement contractors can count on our Roof Top Anchors for versatility, ease of installation and use. In addition, a unique load distributing design ensures worker safety and structural integrity.

HORIZONTAL LIFELINE: COMPATIBILITY



EZ-LINE™ RETRACTABLE HORIZONTAL

EZ-Line™ is user friendly and the fastest HLL system to install, remove and store on the market today! The innovative retractable design allows the user to quickly and efficiently set up any length of system (up to 60 ft (18m); 40 ft (12.2m) in Canada) in only seconds and dismantle it just as quick.



SAYFLINE™ WIRE HORIZONTAL LIFELINE SYSTEMS

The wire rope Sayflin™ system is highly portable and ideal for use in situations where welding, sparks or harsh environments are present or where minimal clearance exists. This all-metal system is durable enough to be left in place for long periods of time and light enough to be moved easily from one job to another.

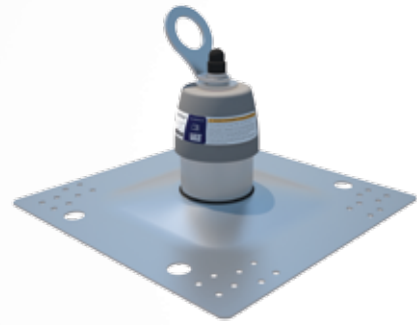
FLEXIBLE SOLUTIONS FOR YOUR ROOF TOP FALL PROTECTION CHALLENGES

CHANGES IN WEATHER, FRAGILE ROOF ELEMENTS, SLIPS AND TRIPS, WIND, SLIPPERY SURFACES CAN ALL ADD TO THE DANGERS OF ROOF WORK, SO PROVIDING A SAFE SYSTEM IS ESSENTIAL TO ENSURE COMPLIANCE AND SAFETY

ROOF TOP ANCHOR FOR MEMBRANE AND BUILT-UP ROOFS

- Base plate size is 16" (405 mm) wide x 16" (405 mm) high
- Toggle fastener holes are set at 13.1" (333 mm) and 7.8" (200 mm) suitable for most roof decks
- Built-in swiveling anchorage ring
- 6" (150 mm) and 12" (300 mm) toggle bolt and concrete bolt kits are available

ANCHOR FOR STANDARD MEMBRANE ROOFS



2100139 – Membrane Roof Top Anchor



2100139 – Installed to Membrane Roof

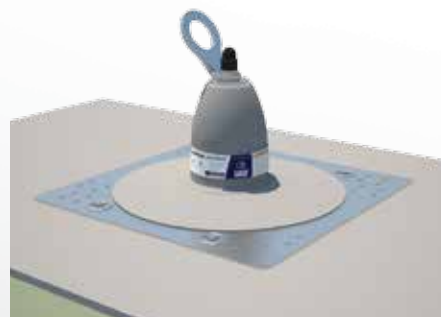


2100139 – Complete Installation

ANCHOR FOR PVC MEMBRANE ROOFS



2100140 – PVC Roof Top Anchor

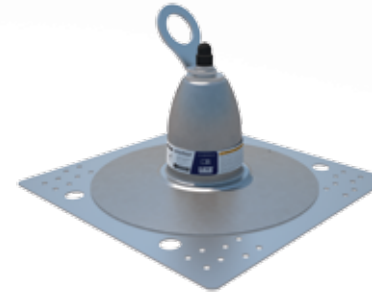


2100140 – Installed to PVC roof

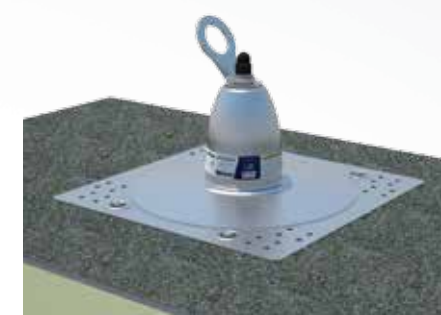


2100140 – Complete Installation

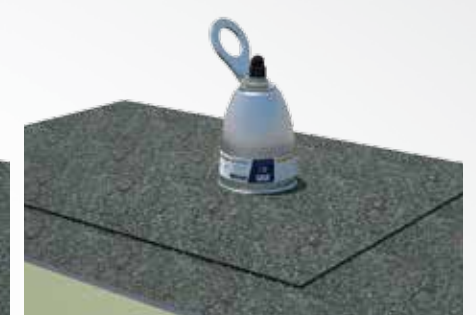
ANCHOR FOR BITUMEN MEMBRANE ROOFS



2100142 – Bitumen Roof Top Anchor

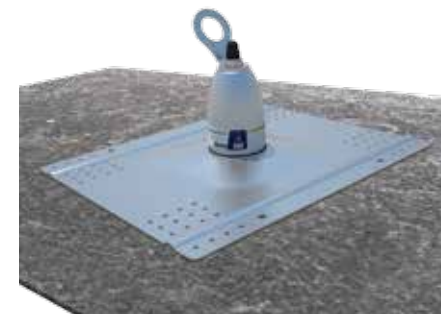


2100142 – Installed to Bitumen Roof



2100142 – Complete Installation

ANCHOR FOR METAL, CONCRETE, WOOD ROOFS



2100133 – Metal Roof Top Anchor



2100133 – Concrete Roof Top Anchor



2100133 – Wood Roof Top Anchor

FASTENERS

- 7241183 – Toggle Bolt Kit, 12" (300 mm), 4-pack
- 7241181 – Concrete Bolt Kit, 12" (300 mm), 4-pack



7241182 – Toggle Bolt Kit, 6" (150 mm), 4-pack



7241180 – Concrete Bolt Kit, 6" (150 mm), 4-pack

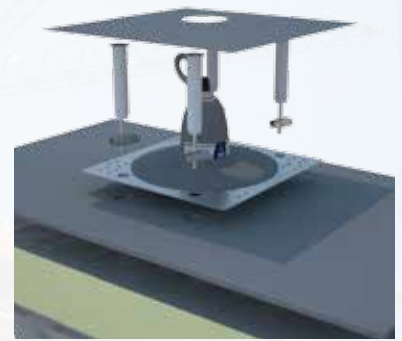
LONG TERM RELIABILITY YOU CAN TRUST

ONE OR TWO PERSON USE

Use as single-point anchor, or configure with Sayflite™ horizontal lifeline between two anchors for 2-person use.

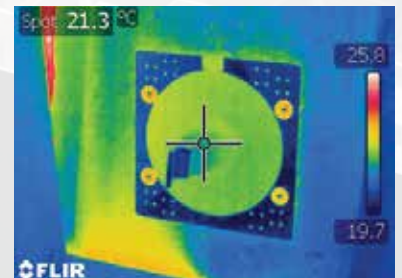
SWIVELING TIE-OFF POINT

Anchorage ring rotates 360 degrees for maximum mobility and protection.



FASTER INSTALLATION

Unique toggle fasteners allow you to simply install the fastener from the top of the Roof Top Anchor's plate for a faster, more cost effective installation. Six and twelve inch toggle bolt lengths are available to suit most built-up scenarios.



THERMAL EFFICIENCY

The design of the Roof Top Anchor reduces thermal bridging, helping compliance with building regulations and saving money. Unique insulated toggles also minimize the affect of thermal bridging.

STEEL CONSTRUCTION

Lightweight design enables fast and easy installation.

FALL ARREST OR RESTRAINT

Multiple configuration options offer job site flexibility.

FITS VARIETY OF ROOF PROFILES

Solutions for standing seam, composite, built-up, membrane, metal, concrete and wood roofs.

AESTHETIC DESIGN

Compliments modern building design, as well as fitting nicely with older buildings.

MULTIPLE FASTENER OPTIONS

Base plates have multiple holes and spacing for greater installation flexibility and are approved for use with many different fasteners.

COMPLIANCE

Conforms to all applicable OSHA and ANSI standards for complete peace of mind.



LOAD DISTRIBUTING DESIGN

Unique energy absorbing design better distributes the forces during a fall to the base plate and fasteners. This provides added safety to the worker and enables the anchor to be installed on a wide variety of old and new roof types without risk to structural integrity.

ROOF TOP ANCHOR FOR STANDING SEAMS

Designed for installation to flat or low sloped aluminum, steel or stainless steel standing seam roofs. This anchor can be fitted to a range of sheet materials and seam profiles including bulb and folded types.

- “Z” Maxi Clamp Kit for Bulb Type Standing Seams, 4-pack
- “E” Maxi Clamp Kit for Double-Folded Standing Seams, 4-pack
- “U” Maxi Clamp Kit for Single Folded Standing Seams, 4-pack



2100138 – Standing Seam Roof Top Anchor

FASTENERS

We provide a range of fastener clamps to fit to varying roof seam profiles.



7241204 – “Z” Maxi Clamp Kit for Bulb Type Standing Seams, 4-pack



7241206 – “E” Maxi Clamp Kit for Double-Folded Standing Seams, 4-pack



7241208 – “U” Maxi Clamp Kit for Single Folded Standing Seams, 4-pack



Capital Safety - USA: 800 328 6146
Canada: 800 387 7484
www.capitalsafety.com