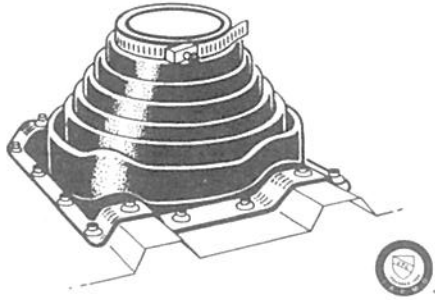


PORTALSPLUS™



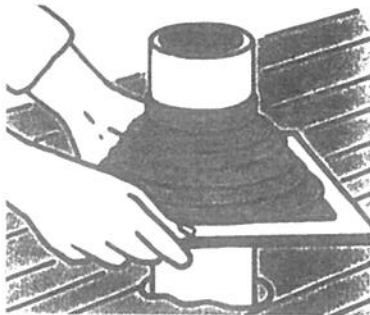
STEP 1

Select sizing. When opening is a bottom of boot size - go to next smaller size boot.



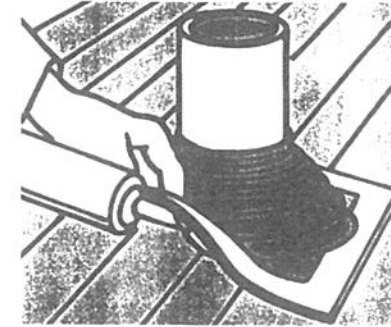
STEP 2

SELECT AND TRIM. Choose appropriate Deck-Mate with opening at least 20% smaller than pipe diameter. If necessary trim opening to 20% smaller than pipe diameter.



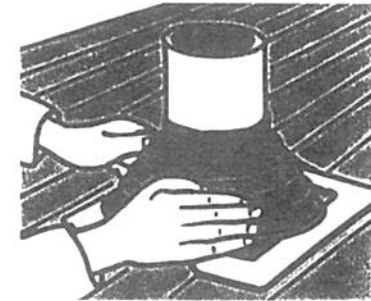
STEP 3

Slide Deck-Mate down over pipe (a non-petroleum based lubricant will ease installation).



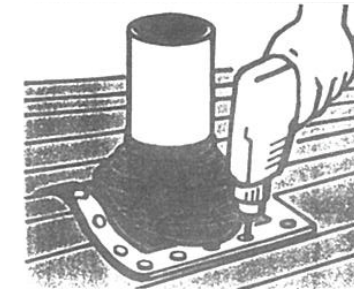
STEP 4

Apply sealant between base and roof membrane.



STEP 5

Press Deck-Mate down, bending it to conform to roof profile or root irregularities. A blunt tool will help press flashing into tight roof angles.



STEP 6

Use fasteners to complete sealing. For UPC installation, fastener spacing may not exceed 1.5" (38mm). Install and tighten stainless clamp at top step of Deck-Mate.

Prefabricated Roof Accessories for ALL Roof Systems!